



# LUSTRE<sup>TM</sup> STONE CARE

## Restorative Cleaner



Lustre Stone Care Restorative Cleaner strengthens the floor as it cleans. With a non-etching, neutral pH formula, Restorative Cleaner can be used on a variety of hard flooring including concrete, terrazzo, stone, and masonry. Featuring unique nanoglass technology, Restorative Cleaner fortifies hardness as you clean to protect against wear and heavy traffic. The rinse-free formula dries quickly to provide a streak-free floor.

# LUSTRE™ STONE CARE RESTORATIVE CLEANER

## FEATURES

- Neutral pH low foam cleaner
- Nano-sized silica particles bond to flooring restoring hardness and durability
- 2-in-1 cleaner and restorer
- Economical concentrate covers over 100,000 sq. ft of flooring per gallon

## BENEFITS

- Safe to use on a variety of hard flooring surfaces
- Restores hardness and durability of concrete, terrazzo, stone, and masonry flooring
- Dries quickly to leave a streak-free finish
- Reduces labor by combining cleaning and restoring into one product

## SPECIFICATION DATA

Dilution	2 oz/gal
pH	8 – 10
Color	Light green
Fragrance	Lemon and sage
Specific Gravity @ 24°C/75°F	1.024
Flash Point	> 95°C/203°F
Stability: Shelf @ 24°C/75°F	1 year minimum
Stability: Freeze/Thaw	Will withstand 1 cycle

## DIRECTIONS FOR USE

### AUTOMATIC SCRUBBERS

Select a pad that meets the cleaning and restoration requirements of the floor.

1. Fill solution tank with water. Do not add cleaner prior to filling tank.
2. Dilute at 1:64 (2 oz. per gallon).
3. Apply using the automatic scrubber. Lustre Stone Care Restorative Cleaner cleans and protects in one step.
4. Allow to dry. No rinse required

### MOP AND BUCKET

Mop application will require two buckets: one for application, and the other for rinse water.

1. Dilute at 1:64 (2 oz per gallon).
2. Apply evenly over the floor with a saturated mop. Lustre Stone Care Restorative Cleaner cleans and protects in one step.
3. Rinse mop in clean water and wring out before reloading with more Lustre Stone Care Restorative Cleaner.
4. Replace clean water frequently to maintain effectiveness of cleaning.
5. Allow floor to dry.

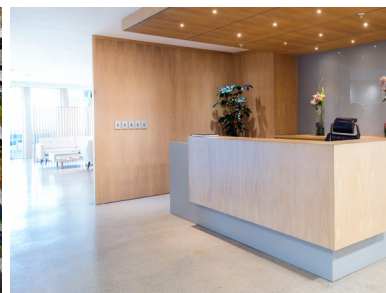
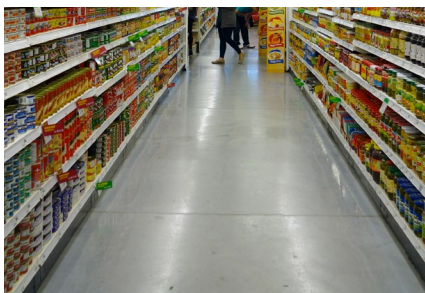
## ORDERING INFORMATION



#581404 #581405

## ADDITIONAL RESOURCES

Scan the QR code to access this product's safety information and documentation.



**SAFETY:** For institutional and industrial use only. Be sure to read all directions, precautionary and first aid statements on product labels before using this or any other Spartan product. If questions remain, consult your employer or a physician. Safety Data Sheets for all Spartan products are available from your authorized Spartan distributor and at [www.spartanchemical.com](http://www.spartanchemical.com). Workplace labels are available in English, Spanish, and French.

**GUARANTEE:** Spartan's modern manufacturing and laboratory control ensures uniform quality. If dissatisfied with performance of product, any unused portion may be returned for credit within 12 months of the date of manufacture.

[www.spartanchemical.com](http://www.spartanchemical.com) • 1-800-537-8990 • 1110 Spartan Drive, Maumee, OH 43537

© 2019 Spartan Chemical Company, Inc. All Rights Reserved. Lustre is a trademark of Spartan Chemical Company, Inc.



12/19 L5814