



CLOTHESLINE FRESH® LAUNDRY DISPENSER QUICK START GUIDE

Models
964600, 964700

Mount and Secure Dispenser to Wall



1 Use the mounting bracket to mark the appropriate mounting location and use as a hole template. For best results, use a level.



2 Drill holes in mounting surface. Use anchors where appropriate.



3 Attach the mounting bracket to the surface.



4 Mount the dispenser onto the mounting bracket and push down the clips to secure the unit to the bracket.



5 Confirm that dispenser is level.



6 To secure the dispenser at the bottom, mark the hole location and secure with the remaining screw.



Spartan Chemical Company, Inc.
www.spartanchemical.com

SERVICE/TECHNICAL SUPPORT
1-800-537-8990

© SCC 12/19 L9647



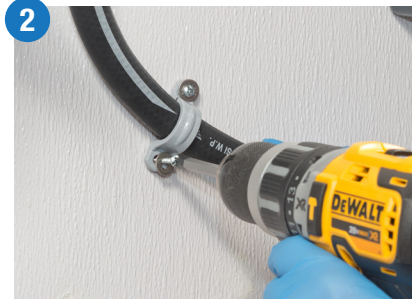
CLOTHESLINE FRESH® LAUNDRY DISPENSER QUICK START GUIDE

Models
964600, 964700

Connect Incoming Water Supply



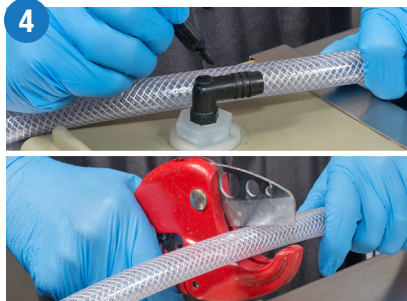
1
Connect incoming water supply using fittings provided. This will either be a 3/4" female garden hose or a 1/2" O.D. push-fit connector. Use 1/2" braided tubing (964800) when creating your own water manifold system.



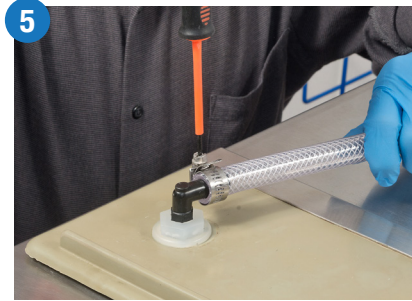
2
Install wall supports for the incoming water supply hose. This will prevent unnecessary force on the inlet fittings.



3
Connect 1/2" braided tubing (964800) to the water outlet and then run tubing to washing machine.



4
Measure and cut outlet tubing to the desired length.



5
Attach outlet tubing to the washer where appropriate.



Spartan Chemical Company, Inc.
www.spartanchemical.com

SERVICE/TECHNICAL SUPPORT
1-800-537-8990



CLOTHESLINE FRESH® LAUNDRY DISPENSER QUICK START GUIDE

Models
964600, 964700

Connect and Route Chemical Pickup Tubes



1 Use cover key to open cabinet. Push key into the center slots on the right side to release, then lift cover.



2 Insert the white flush vent valve into the first eductor (left-most eductor). **Do not** connect any chemical hoses to this valve.



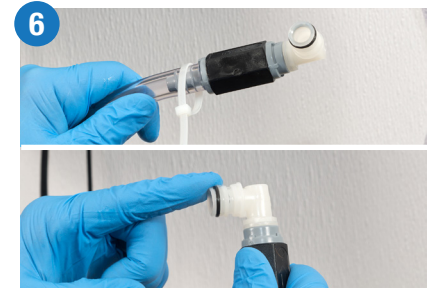
3 Open chemical containers.



4 Insert 3/8" barbed insert (964900 [5gal.], 965700 [15gal.], 965900 [30gal.], 967500 [55 gal.]) or tube stiffener into the container and secure properly.



5 Measure and cut 3/8" x 5/8" vinyl tubing (961700) to the length needed to connect the containers to the dispenser check valves. Then, connect and secure the tubing to the barbed inserts.



6 Insert and secure check valve to other end of vinyl tubing. Apply provided lubricant to valve.



7 Insert check valve elbow into the appropriate eductor, secure with clip.



8 Affix line tags at the bucket and below the check valve to identify chemical being dispensed.



9 Repeat for all chemicals and secure all tubing together.



Spartan Chemical Company, Inc.
www.spartanchemical.com

SERVICE/TECHNICAL SUPPORT

1-800-537-8990

© SCC 12/19 L9647



CLOTHESLINE FRESH® LAUNDRY DISPENSER QUICK START GUIDE

Models
964600, 964700

Power Connection and Hooking Up to the Machine



1 Connect the machine interface to the washing machine and install the controller.



2 Connect the Clothesline Fresh Laundry Dispenser to the controller via the pre-wired J1 cable coming from the dispenser.



3 Connect the wall power adapter to a wall outlet providing 110V to 240V AC at 50 – 60 Hz to 0.8 amps.



4 Prime all chemical lines and calibrate each product. Please consult calibration tables for proper values based on chemicals being used.



5 Upload your chemical formulas via USB to the Clothesline Fresh Laundry Controller.



6 Program the machine based on facility demands.



7 Run test load.



Spartan Chemical Company, Inc.
www.spartanchemical.com

SERVICE/TECHNICAL SUPPORT
1-800-537-8990

© SCC 12/19 L9647