

# HARD FLOOR CARE:

## Ice Melt Residue

In the winter, salt residue tracked into buildings can leave high-gloss floors looking dull and dingy. Furthermore, salt granules can cause scratches and deep gouges on hard floors. If left untreated, salt granules and ice melt tracks can damage finished floors.

### VERSATILE FLOOR CARE

Spartan Chemical offers a wide selection of care products to clean and maintain your floor surfaces. Regular use of Spartan floor cleaners removes residue and prevents scratches and dull floors.



#### **FLOW™** (004304)

Neutral pH Floor Cleaner

- Low-foam daily cleaner for use on all surfaces not harmed by water
- Safe for routine maintenance, even on polished concrete
- Suitable for automatic floor scrubs and other cleaning applications



#### **Clean by Peroxy®** (003504)

Hydrogen Peroxide Floor Cleaner

- Multi-purpose peroxide cleanser safe for floors
- Green Seal™ Certified



#### **Xcelente®** (001904)

Neutral pH Floor Cleaner

- Lavender scented, phosphate-free hard surface cleaner
- Green Seal™ Certified



#### **Shinline Floor Prep®** (302904)

Acidic pH Floor Cleaner

- Eliminates alkaline residue remaining on floors after stripping or restorative cleaning
- Deep penetration and bonding extend the life of the floor finish

### PROTECT FLOORS FROM ICE MELT DAMAGE

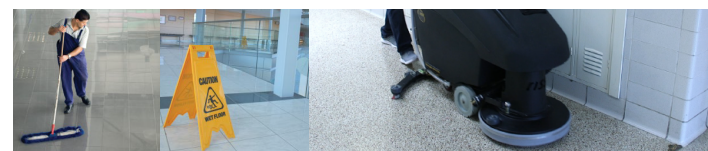
Use a floor cleanser from the list of recommended products.

***Wet floors can be slippery. Prevent pedestrian traffic with signs or barricades.***



#### **Mop & Bucket Method**

1. Sweep the floors to remove as much large ice melt particulate as possible.
2. Clean floor using the chemical solution. Flood mop by using extra water to float the residue and suspend it in the water.
3. Ring out mop and remove the soiled solution.



#### **Auto Scrubber Method**

1. Sweep the floors to remove as much large ice melt particulate as possible.
2. Clean floor using the chemical solution and cleaning pad of your choice.
  - A. First pass: turn off vacuum and raise your squeegee and make sure your water setting is on max output.
  - B. Second pass: lower your squeegee with the water setting still on max output and scrub the floor while picking up soiled solution.

#### **PRODUCTIVITY TIP!**

*Because ice melt is relatively easy to remove, improve productivity on your next project by increasing the dilution ratio and using cold water. Plan to add a little dwell time to give the leaner chemical solution time to work.*

### FOR MORE INFORMATION, CONTACT YOUR SPARTAN DISTRIBUTOR